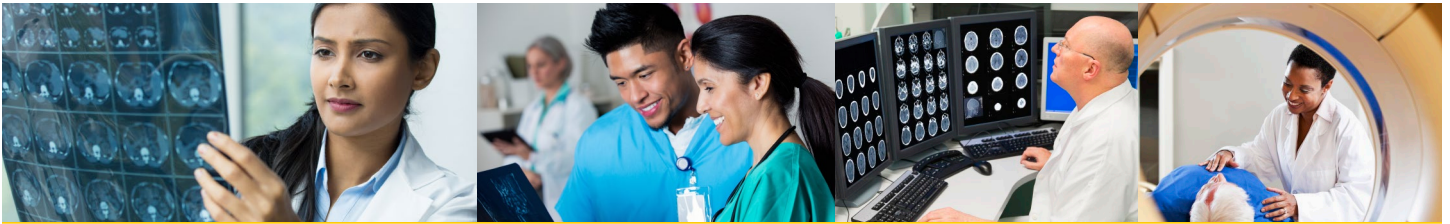

Heartland Community College AAS Radiography to University of St. Francis B.S. in Health Care Leadership



Heartland Community College students can work toward their Bachelor of Science in Health Care Leadership at the University of St. Francis while obtaining their associate's degree! Busy students will benefit from USF's accelerated, online bridge program, which helps them complete their degree using credits they already have.

**REDUCED TUITION RATE OF
\$399 PER CREDIT HOUR!
COMPLETE 27 HOURS OF HEALTH CARE
LEADERSHIP COURSEWORK FOR
UNDER \$11,000.**

Advantages of the bridge program include:

- Online, eight-week accelerated classes beginning six times per year
- Degree completion in as little as 15 months
- Reduced tuition rates
- Graduate-level classes that can be completed as part of your undergraduate program
- Prior Learning/Portfolio and testing options available
- Dedicated faculty advisors providing individualized attention to help students stay on track and succeed
- Financial aid available, including payment plans and tuition reimbursement deferment

WHO SHOULD ENROLL IN A BRIDGE PROGRAM?

Current community college students

Students can enroll in B.S. program while completing an associate's degree.

Recent community college graduates

Students who have graduated within the last five years and are ready to take the next step in their education and career.

For more information

Please contact Lisa O'Brien at lobrien@stfrancis.edu or 815-740-6266.



Heartland Community College AAS Radiography to University of St. Francis B.S. in Health Care Leadership

The program at Heartland requires 68 hours of coursework, all of which will be transferred to USF. A maximum of 80 credit hours will be accepted from Heartland for transfer credit.

UNIVERSITY OF ST. FRANCIS

General Education

ENGL 210 Writing for Professionals (3)
GENS 201 Research and Decision Making (3)
THEO 206 Christianity in the Modern World (3)

BSAD 214 Economics & Stewardship (3)
HIST 210 Founders of the Modern World (3)
GENS 220 Understanding Lit & the Arts (3)
ENVS 210 Environmental Science & Social
Implications (3)

Health Care Leadership Major

HCLD 310 Mgmt in Healthcare Org. (3)
HCLD 336 Ethics in Healthcare (3)
HCLD 342 Healthcare Delivery (3)
HCLD 345 Health Information Mgmt (3)
HCLD 346 Healthcare Acc & Budgeting (3)
HCLD 347 Health Law, Reg. and Policy (3)
HCLD 403/603 Org and Human Resource Management (3-4)**
HCLD 407/607 Medical Sociology (3-4)**
PUBH 314 Epidemiology (3)

Health Care Leadership Electives

All students should consult with an advisor or counselor to map their academic plan. Students should also refer to specific program admission requirements as stated in their respective college/university catalogues and departmental Web pages.

HEARTLAND COMMUNITY COLLEGE

21 credit hours

Must be taken at USF
Must be taken at USF
Must be taken at USF

Approved IAI course*
Approved IAI course*
Approved IAI course*
Satisfied through AAS degree

*Can be transferred in for credit as long as student is under the 80 hour maximum

27-29 credit hours

Students may choose to take two courses towards the M.S. in Health Administration, receiving credit for the bachelor's program as well as two courses in the graduate program

Students may need additional credit hours to meet the graduation requirement of 120 credit hours.

